

# Sustainability at the EIICC

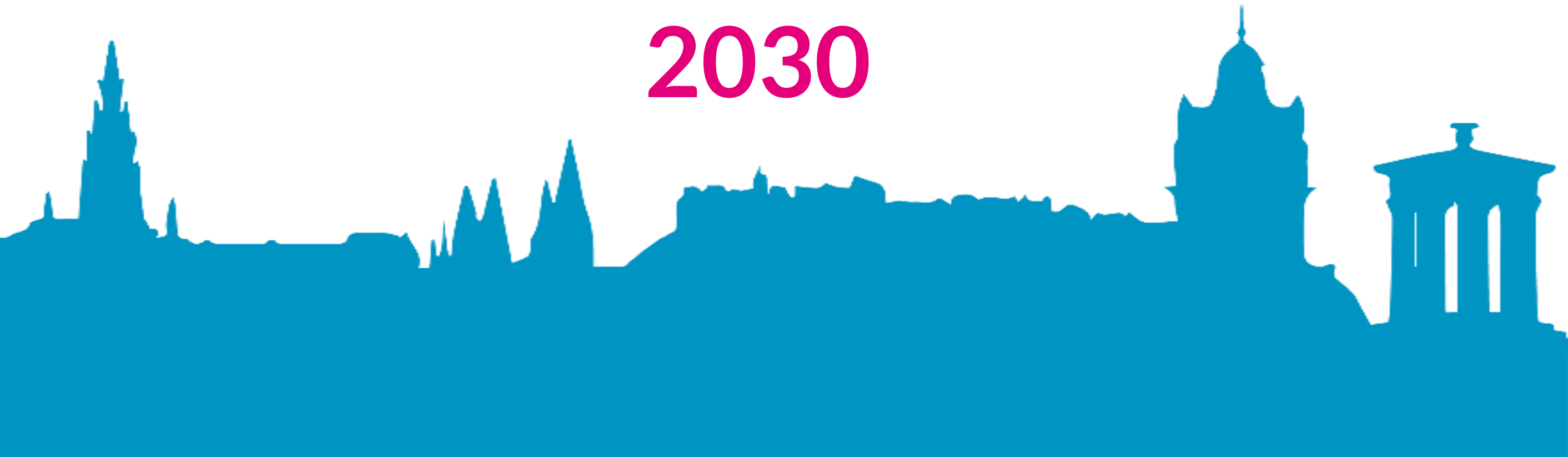




# Sustainability at the EIIC

**The EIIC is working towards the City of Edinburgh's  
Net-Zero Emissions target by**

**2030**





# Sustainability at the EICC



**Edinburgh International Conference Centre**

**Carbon Emissions Reduction Strategy**

## *Carbon Emissions Reduction Strategy*

*There are three KPIs relating to carbon emissions for the period 2020-2023*

1. Maintain **Zero Waste** to landfill.
2. **80%** of all EICC operational travel to be conducted by means of sustainable transportation and or least impactful means of travel.
3. **60%** reduction in carbon emissions on the 2013 baseline figure by 2023.

# Sustainability at the EICC



## ISO 14001

The EICC has been certified since 2005. Our “environmental management system” which demonstrates our environmental conscientiousness in decision making, operations, and procedures.



## ISO 9001

The EICC has been certified since 1998. Our “quality management system” demonstrates a strong customer focus, the motivation and implication of top management, the process approach and continual improvement.



## Green Tourism Gold Award

EICC was the first venue to receive a Green Tourism Gold award which has, over the years, gone on to become one of the most prestigious and well recognised eco-tourism awards.



## Green Meetings Award

EICC was once again the first venue to receive this award in 2021 which advocates and assesses best practice environmental management in the more specific business events sector.



## Living Wage Employer

All staff members, including subcontractor’s staff, are paid at or above the rate set by the Living Wage Foundation. We will continue to engage with the foundation and provide everyone at the EICC the means to live a dignified lifestyle.

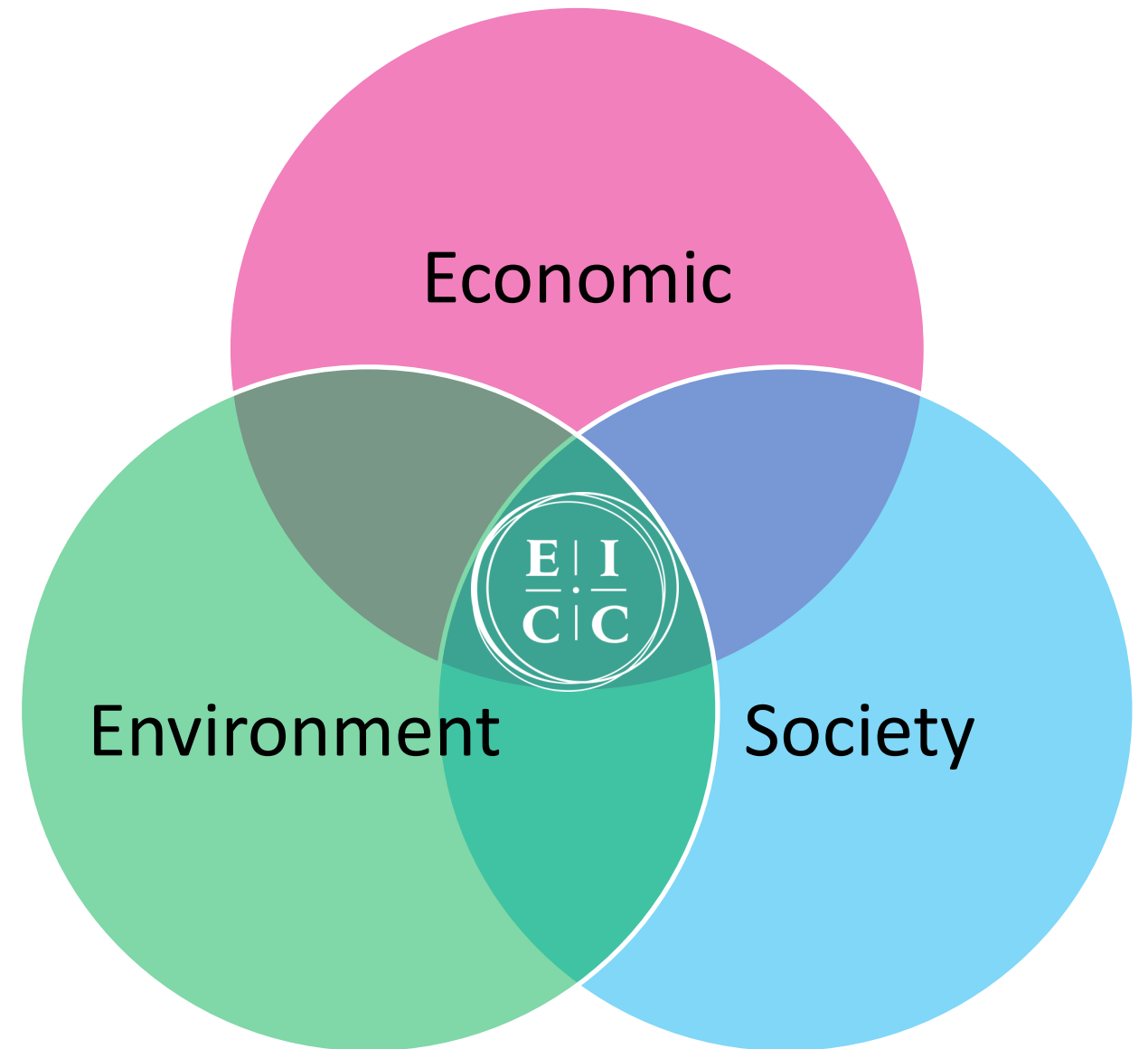


## Hospitality Assured

Created by the institute of hospitality in the UK, “Hospitality Assured” assesses organisations to ensure they are providing the highest levels of service and operate with the customer at the heart of decision making.

# Sustainability at the EIIC

- EIIC take a “**triple bottom line**” approach to sustainability
- Only when our **economic, societal and environmental aspects** are treated equally, can we achieve true sustainability.
- Our sustainability programme, **Step Change**, focuses on these **three** equally significant, interconnected areas of impact.



# Step Change

The EICC's Sustainability Programme





# DESK T

*An integrated sustainable travel initiative minimising your carbon emissions, reducing pollution and promoting wellbeing*



# DOOR

## Desk-to-Door



*We have established partnerships with sustainable transport providers locally and nationally, making it easier for our clients to limit their events emissions.*

*Nationally, we have partnered with **LNER** to provide group travel discounts and with have discounts available with **Logan Air**.*

*On a more local level, we can create connections with **Edinburgh Trams** (an inherently sustainable mode of transport) and **Central Taxis** (a carbon neutral taxi company since 2010) to move attendees around the city.*





# DESK T



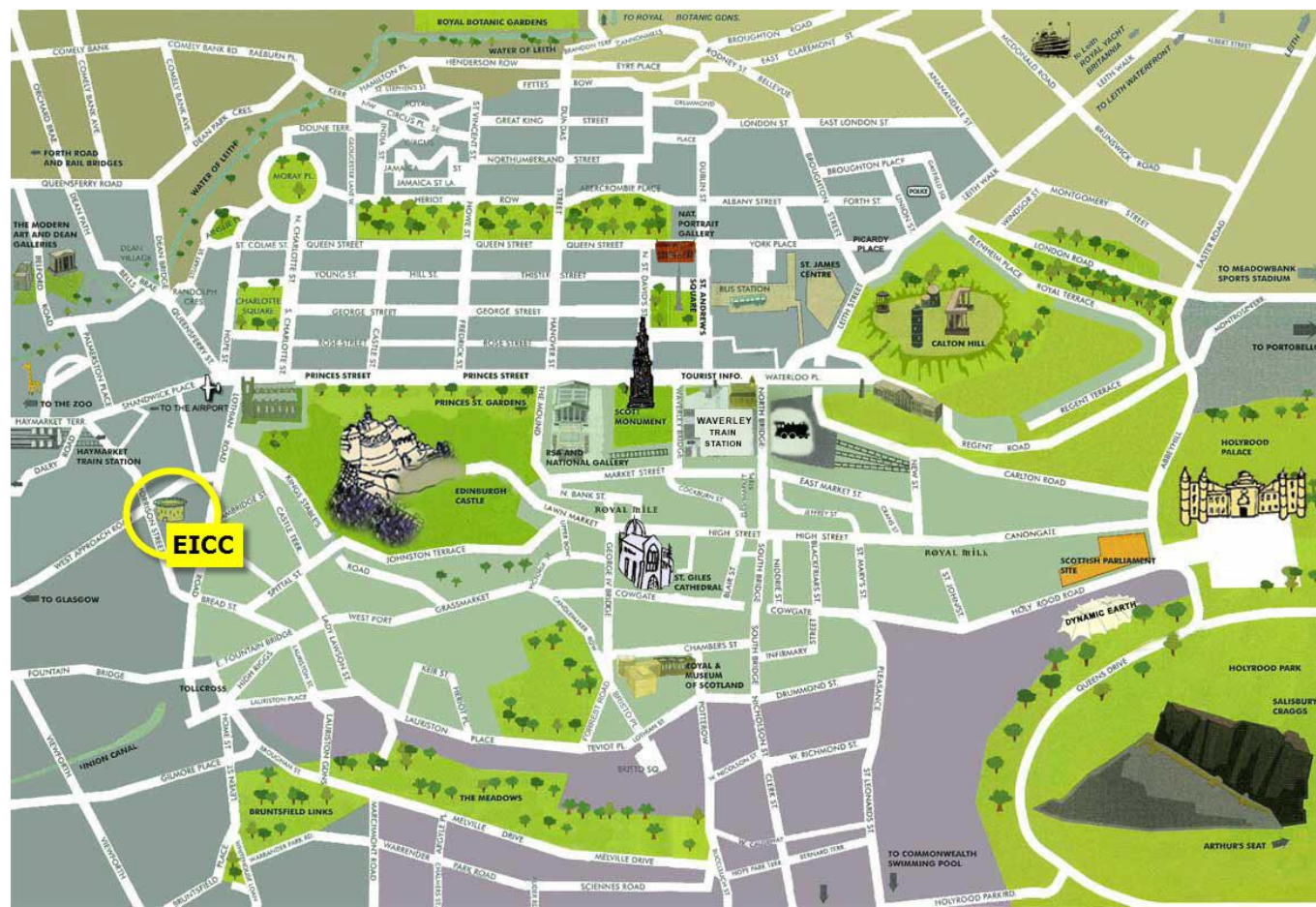
An integrated sustainable travel initiative minimising your carbon emissions, reducing pollution and promoting wellbeing



# DOOR

## Desk-to-Door

Edinburgh is a beautiful and **walkable city**, which makes it very easy to reach EICC on foot from the surrounding travel hubs, hotels, restaurants and attractions.





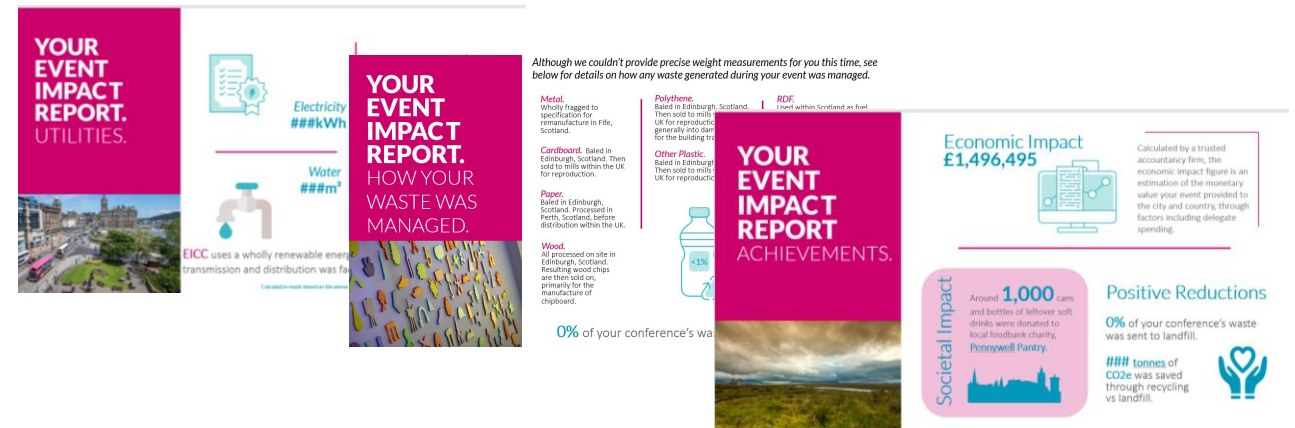
# EICC EVENT IMPACT REPORTS

Every event at the EICC regardless of size will be issued an event impact report. These reports can be used for clients own reporting purposes, for validating ISO 14001, PR and communications.



## Event Impact Reports

- We offer **Event Impact Reports** which provide data on the environmental, social, and economic impression made during your time at the EICC.
- With this data, together we can set environmentally focused benchmarks for future events and strive to achieve a greener and more sustainable future for our industries.



# EICC EVENT IMPACT REPORTS

Every event at the EICC regardless of size will be issued an event impact report. These reports can be used for clients own reporting purposes, for validating ISO 14001, PR and communications.



## YOUR EVENT IMPACT REPORT ACHIEVEMENTS.



### Economic Impact £1,496,495



Calculated by a trusted accountancy firm, the economic impact figure is an estimation of the monetary value your event provided to the city and country, through factors including delegate spending.

### Societal Impact

Around **1,000** cans and bottles of leftover soft drinks were donated to local foodbank charity, [Pennywell Pantry](#).



### Positive Reductions

**0%** of your conference's waste was sent to landfill.

**### tonnes** of CO<sub>2</sub>e was saved through recycling vs landfill.



# GIVE SOMETHING BACK

The EICC is part of an innovative project to restore peatland in Caithness and Sutherland in the Scottish Highlands.

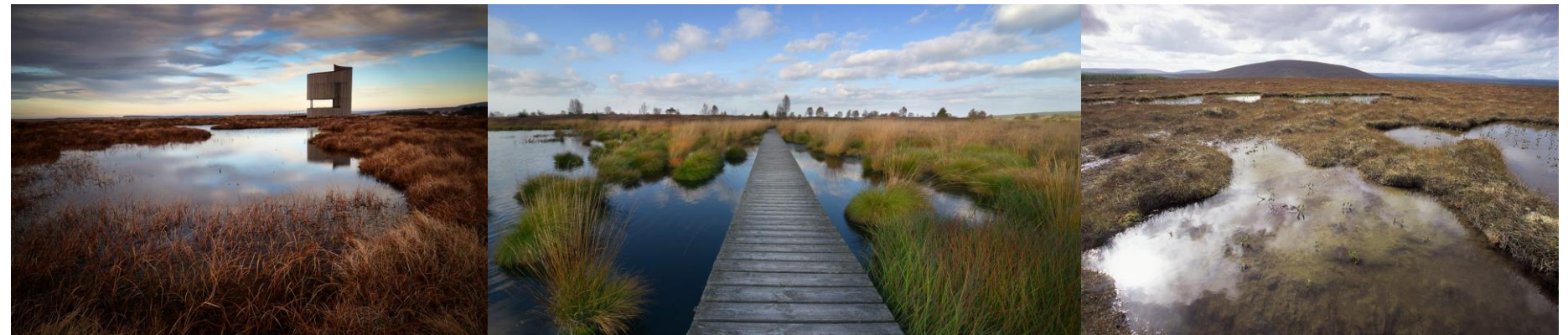


## Give Something Back

The EICC *Climate Action Contribution* is in with RSPB Scotland, part of the RSPB, the UK's largest nature conservation charity, on a unique and innovative scheme to restore Scotland's most underappreciated but valuable biomes – our Peatlands.

Peatlands are the world's largest terrestrial carbon store, and their restoration has been shown to be more effective at capturing carbon than tree planting initiatives. By working together, we can help cut emissions, lock up carbon, and save our wildlife for future generations.

This means that the equivalent of **£1 per delegate per day**, or **50p per dinner guest**, that is spent with EICC will be ringfenced purely for Peatland Restoration in the north of Scotland.



# GIVE SOMETHING BACK

The EICC is part of an innovative project to restore peatland in Caithness and Sutherland in the Scottish Highlands.



SCOTLAND



## Why Peatland?



Peatland restoration can be 4x more effective as a carbon sink than their tree planting equivalent

Helping to restore 250,000 ha of peatland in The Flow Country area. The equivalent of 250,000 rugby pitches.

# 250,000 x



Peatland is the largest terrestrial carbon store – 42% of all soil carbon is sequestered within peat bogs



Worldwide, degraded peatland releases an estimated 1.3 gigatonnes of CO<sub>2</sub>e annually. (1,300,000,000 tonnes)



Peatland restoration is about more than just carbon. It creates jobs, improves water supplies, and protects some of our most endangered species

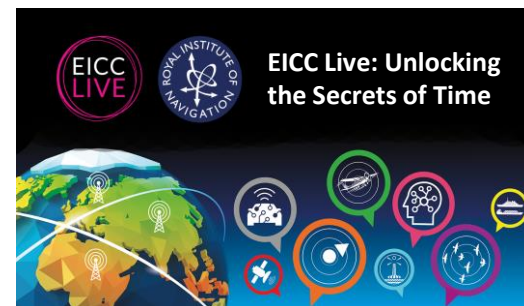
# Societal Impacts



# Societal Impacts

## EICC Live

- *Free public event series bringing together students, retirees, professional, and everyone in-between to enjoy an evening of short, powerful presentations.*





# Societal Impacts

## Charity Partnerships



Mary's Meals make regular collections from EICC for their Backpack Project which provides school supplies to poverty stricken countries.

# Societal Impacts

## Fringe Ticket Giveaways

- The EICC and Festival Fringe partner, The Pleasance Theatre Trust, provided **hundreds** of Fringe tickets to local communities.
- Local charities and social enterprises who received free tickets for communities included:
  - North Edinburgh Arts
  - Eric Liddell Centre
  - Invisible Cities
  - The Ukrainian Society
  - Grassmarket Project
  - Shakti women's aid.

EICC provides hundreds of Fringe tickets to local community charities





# Societal Impacts

## Volunteering

- *Each employee given one day a year to take part in charitable / volunteer work*



# EICC – What we do





# EICC – What we do

- Our target is to reach Net Zero by 2030
- Around 90% of our emissions come from our supply chain, so if we are going to make a real difference, we need to start here.
- We want to be market leaders in sustainable food; delivering locally sourced, plant forward and in-season menus, as well as working with our partners and suppliers to continually reduce emissions and food waste across our supply chain.
- We've identified suppliers with high welfare standards and who are putting sustainability at the heart of their business, and this has formed the road-map for our Scottish Supply Chain.
- We're encouraging our suppliers to sign-up to the Climate Hub and make commitments to Net Zero with Science Based Targets.
- We are taking significant steps to improve our business practises and reduce our emissions, including training our teams on sustainable working practices, energy efficiency, and recycling.
- We have partnered with Swedish startup **Klimato** to calculate the carbon footprint of the dishes served.



# EICC – What we do

## Energy

### We're Serious About Our Energy

- EICC is powered using a **100% renewable energy tariff** supplied by EDF energy which is backed by UK REGO (Renewable Energy Guarantees of Origin) or European GoO (Guarantees of Origin) from a blend of sources including hydro, wind, solar, biomass and landfill gas.
- We've implemented a range of measures to reduce our energy consumption, including **LED lighting** and energy in use mapping. We have replaced a great number of our lighting to far more efficient LED alternatives.
- We also operate a "**sustainable procurement policy**" which helps us ensure that new plant and equipment is replaced with more efficient, more environmentally friendly alternatives.





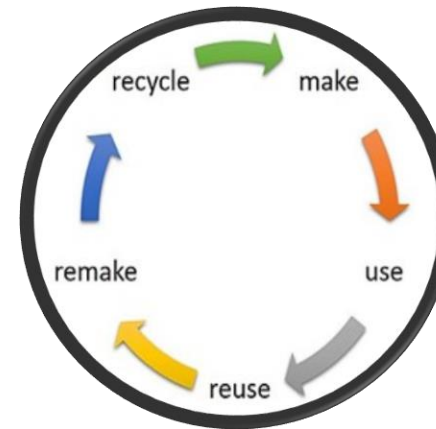
# EICC – What we do

## Waste

### We've Established Our Own Local Circular Economy

- The EICC encourages its delegates and organisers think about their waste following the “five Rs” principle:

- Refuse
- Reduce
- Re-use
- Re-cycle
- Re-purpose



- To assist in this, we have a variety of recycling facilities placed throughout the centre.
- Our local waste management partner provides 100% recycling, and **NOTHING** is sent to landfill.



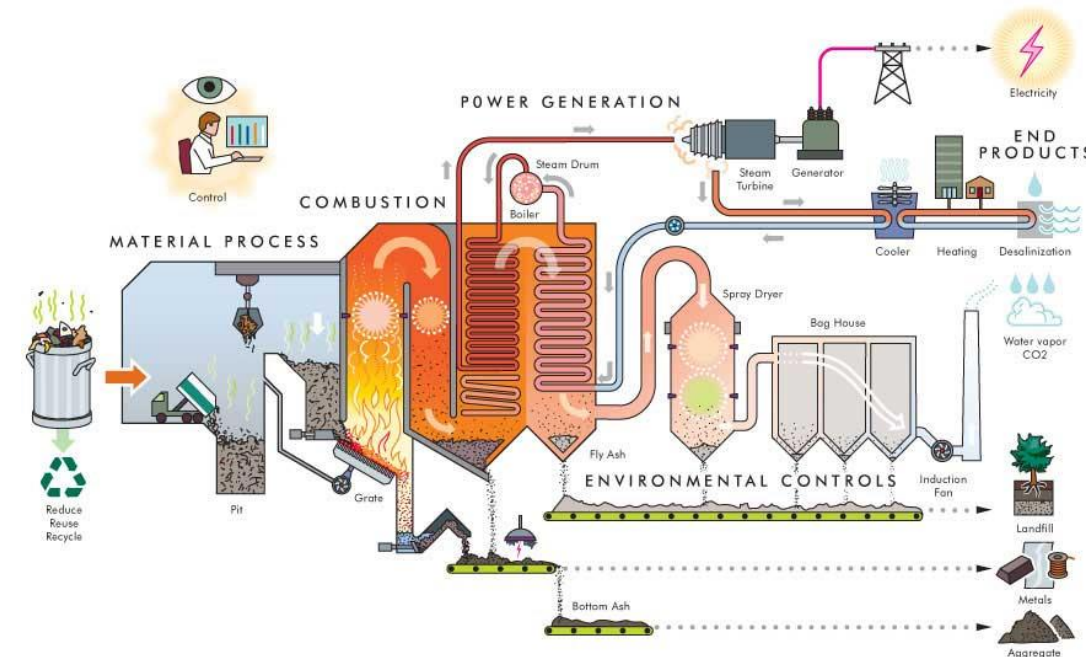
# EICC – What we do

## General Waste

- Our general waste is sent to a local facility which recycles everything it can.



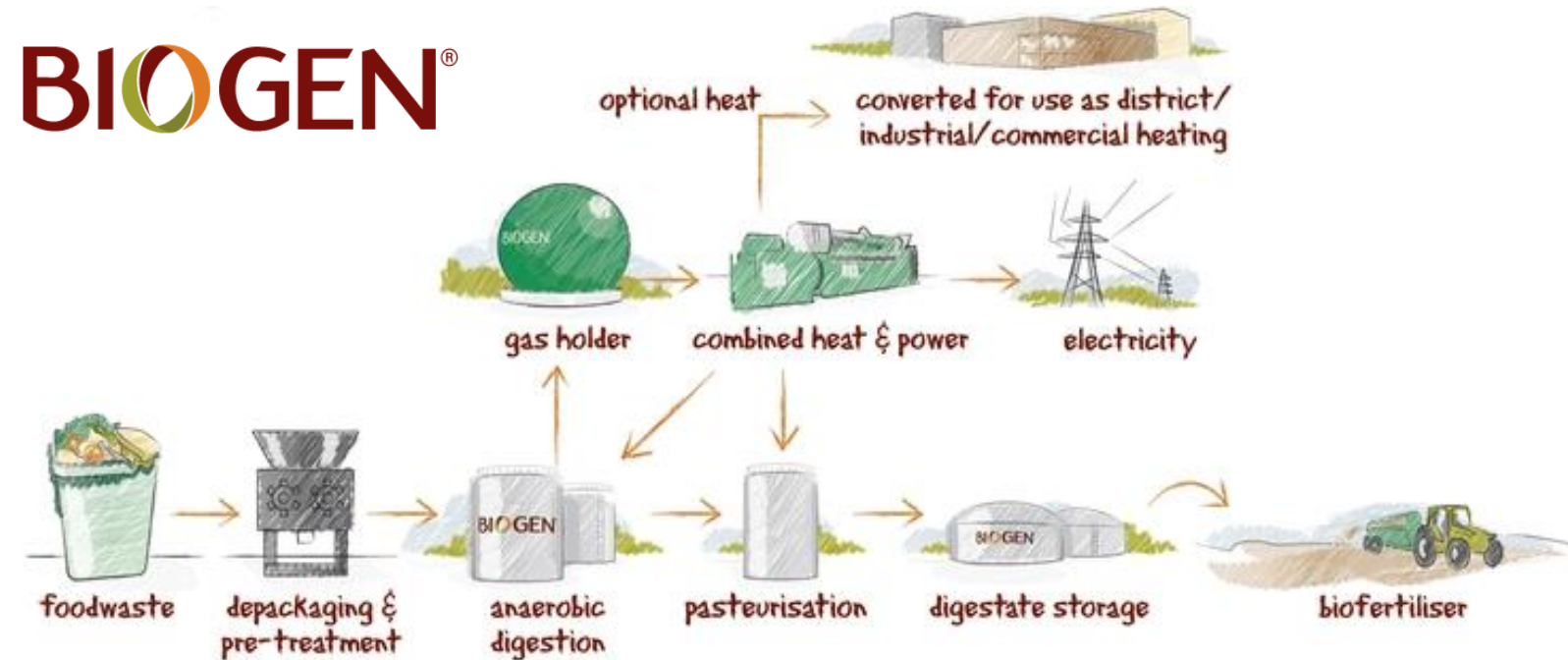
- The rest is turned into **RDF** (refuse derived fuel) which supplies energy to the grid.



# EICC – What we do

## Food Waste

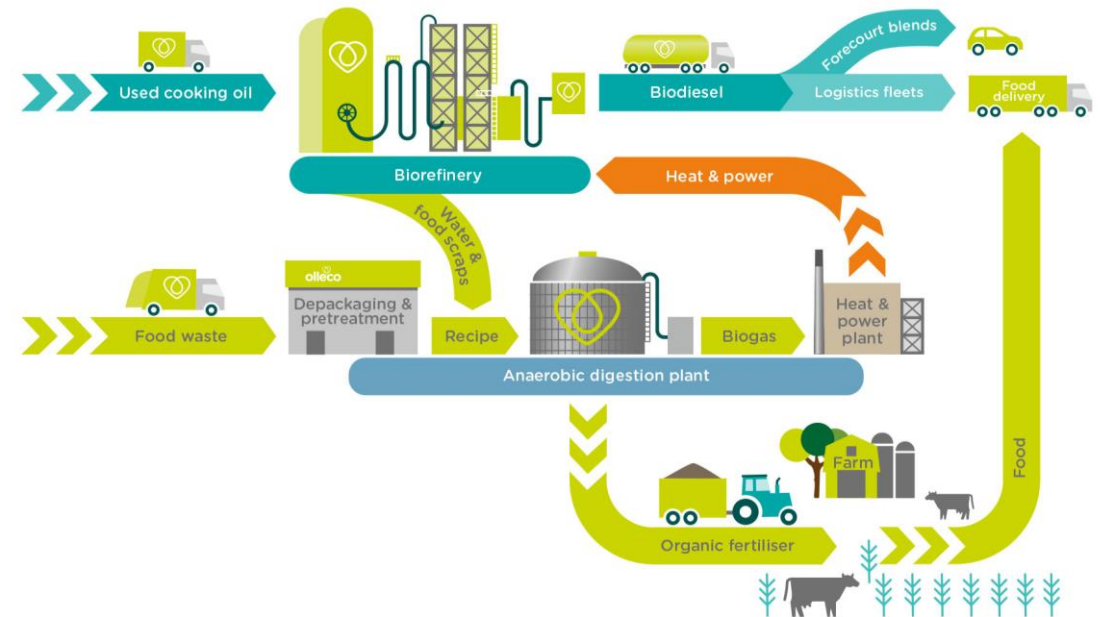
- Our food waste taken to a local facility.
- Using aerobic digestion, is turned into *energy* and *biofertilizer*.



# EICC – What we do

## Oil Waste

- The waste oil from the kitchens is taken Our to a local facility and refined into **Biodiesel**.





# EICC – What we do

## Cycle to Work

- *EICC Cycle to Work scheme enables employees to save up to 42% on the cost of a bike.*





Rob Turnbull  
Sustainability Manager  
[robt@eicc.co.uk](mailto:robt@eicc.co.uk)